



Service of Worship

First Sunday of Lent

March 9, 2025 || 10:00 a.m.

Permission to print and/or broadcast music is obtained through One License #A-728044.

Assemble in God's Name

We joyfully welcome you to worship this morning!
All are invited to use the Reflection and Prelude as a time of preparation.

Prayerful Reflection “A Listening” by Ann Weems, *Kneeling in Jerusalem*

Going through Lent
is a listening.
When we listen to the word,
we hear where we are so blatantly
unliving.
If we listen to the word,
and hallow it into our lives,
we hear how we can
so abundantly
live again.

Prelude *Intermezzo, Op. 118, No. 2* Johannes Brahms

Welcome

**Call to Worship*

Leader: *As we enter this journey through Lent,
we come to a place of reflection and renewal.*

People: We gather to listen, to seek, and to open our hearts
to God's transforming presence.

Leader: Throughout these 40 days, we will encounter questions that challenge us
to look deeper, to examine our faith, and to grow in our walk with
Christ.

People: We are here to listen for God's voice,
to seek God's wisdom, and to be shaped by God's
truth.

Leader: Then let us offer ourselves to God as we journey with Christ
through this season of reflection and growth.

People: Let us worship God.

Hymn #301

Let Us Build a House

Two Oaks

Capo 3: (A7) (D) (A) (D) (G) (A) (Bm)
 C7 F C F B \flat C Dm



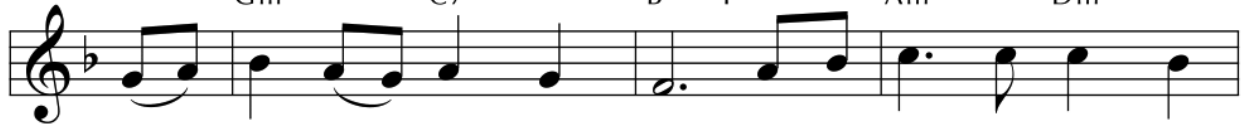
1 Let us build a house where love can dwell and all can
 2 Let us build a house where proph - ets speak, and words are
 3 Let us build a house where love is found in wa - ter,
 4 Let us build a house where hands will reach be - yond the
 5 Let us build a house where all are named, their songs and

(D) (A) (D) (Bm7) (Em) (A)
 F C F Dm7 Gm C



safe - ly live, a place where saints and chil - dren tell
 strong and true, where all God's chil - dren dare to seek
 wine, and wheat; a ban - quet hall on ho - ly ground
 wood and stone to heal and strength-en, serve and teach,
 vi - sions heard and loved and trea - sured, taught and claimed

(Em) (A7) (G) (D) (F#m) (Bm)
 Gm C7 B \flat F Am Dm



how hearts learn to for - give. Built of hopes and dreams and
 to dream God's reign a - new. Here the cross shall stand as
 where peace and jus - tice meet. Here the love of God, through
 and live the Word they've known. Here the out - cast and the
 as words with - in the Word. Built of tears and cries and

(Em) (A) (D) (G)
 Gm C F B \flat



vi - sions, rock of faith and vault of grace; here the
 wit - ness and as sym - bol of God's grace; here as
 Je - sus, is re - vealed in time and space; as we
 strang - er bear the im - age of God's face; let us
 laugh - ter, prayers of faith and songs of grace; let this

Refrain

(D) (G) (F#7) (Bm) (Em) (Bm)
 F B^b A7 Dm Gm Dm

love of Christ shall end di - vi - sions:
 one we claim the faith of Je - sus:
 share in Christ the feast that frees us: all are wel - come;
 bring an end to fear and dan - ger:
 house pro-claim from floor to raf - ter:

(F#m) (Em) (D) (Em) (A7) (D) (G) (D)
 Am Gm F Gm C7 F B^b F

all are wel - come; all are wel - come in this place.

**Invitation to Confess*

**Prayer of Confession*

Gracious God,
 We come to you seeking renewal.
 You invite us to look beyond the surface
 to examine the deeper places within us where pride,
 judgment and unacknowledged struggles hide.
 But we focus on the imperfections of others,
 while refusing to confront
 the brokenness within ourselves.

Forgive us, Merciful One,
 for the times we have pointed fingers
 without first examining our own hearts;
 for the times we've seen the world through a scornful lens
 rather than compassion;
 for the moments we've been quick to criticize
 and slow to listen.
 for the times we've allowed judgment to overshadow love;

Throughout this Lenten season,
 lead us in the ways of humility
 that we might see our deep need for grace.
 Help us face our own brokenness;
 and, in doing so,
 find the path to true healing and wholeness.

~ silent reflection and confession ~

***Assurance of Grace**

Leader: Celebrate the Good News!
We are forgiven, not because of our perfection,
but because God's amazing love meets us where we are
and calls us to new life.

People: In Christ, we are met with compassion, not judgment.
Freed from the burdens of the past,
we will live for the Lord!

***Response to Grace**

Agnus Dei (Farlee)

Lamb of God, you take a - way the sin of the world; have
mer - cy on us. Lamb of God, you take a - way the sin of the
world; have mer-cy on us. Lamb of God, you take a - way the
sin_ of the world; grant us peace; grant us peace.

GTG: #604

***Passing of the Peace**

Leader: As we journey through this season of reflection and repentance,
we remember that Christ's peace heals and restores.

People: May it guide us to release all that weighs us down,
and live out the grace we've been given.

Leader: May the peace of Jesus be with you all.

People: And also with you..

~ All in the sanctuary are invited to share peace with others ~

Livestream Check-In

~ Children are invited to come forward.~

Children's Message

Proclaim God's Word

Prayer for Illumination

Scripture Lessons

Matthew 7: 1-5

Leader: For the word of God in Scripture,

For the word of God among us,

For the word of God within us,

People: Thanks be to God.

Sermon

Questions Jesus Asked—Part 1:

*Why do you see the speck in your neighbor's eye,
but do not notice the log in your own eye?*

Respond in Thanks & Faith

Hymn #771

What Is the World Like

New World

Capo 1: (G) A^b (Em7) Fm7 (C) D^b (D) E^b

1 What is the world like when God's will is done?
 2 What is the world like when God's will is done?
 3 What is the world like when God's will is done?
 4 What is the world like when God's will is done?
 5 These are the sto - ries that Je - sus im - parts,

(Em) Fm (C) D^b (Am) B^bm (B7) C7

Mus - tard seeds grow more than we can con - ceive:
 Wit - ness the wan - der - ing child com - ing home;
 No more is neigh - bor just al - ly or friend;
 Read - y for feast - ing, we watch through the night,
 filled with the Spir - it who joins us as one.

(Em) Fm (Am) B^bm (D) E^b (G) A^b

roots thread the soil; branch - es reach for the sun.
 watch as the par - ent breaks in - to a run.
 peace thrives in plac - es where once there was none.
 tend - ing our lamps till the new day's be - gun.
 Born through our voic - es, our hands, and our hearts,

(C) D^b (Em7) Fm7 (Am7) B^bm7 (D) E^b (G) A^b

This is how God moves us each to be - lieve.
 This is how God longs for us when we roam.
 This is how God works when ri - val - ries end.
 This is how God read - ies us for the light.
 this is a new world where God's will is done.

Offering Our Gifts to God

Ways to offer financial gifts

- Towsonpres.org – click the orange “Give” button at top of page
- Text a dollar amount to 84321
- Drop off or mail check to the church



- Scan this QR code →

Offertory

Little Innocent Lamb

Marshall Bartholomew

Prayers of the People & The Lord's Prayer

Jasen Carter &

Sophie Soirez

Our Father, who art in heaven, hallowed be thy name,
thy kingdom come, thy will be done, on earth as it is in heaven.

Give us this day our daily bread

and forgive us our debts, as we forgive our debtors

and lead us not into temptation but deliver us from evil.

For thine is the kingdom, and the power, and the glory, forever. Amen.

Hymn #740

Lead Me, Guide Me

Lead Me, Guide Me

Capo 1: (D) (A7) (Em)

Refrain E^b B^b7 Fm

Lead me, guide me, a - long the way, for if you

lead me, I can - not stray. Lord, let me walk each

day with thee. Lead me, O Lord, lead me.

I am weak and I need your strength and power to help me

o - ver my weak - est hour. Help me through the dark-ness your

face to see. Lead me, O Lord, lead me.

Fine *to Refrain*

**Benediction*

Postlude
J.S. Bach

Fugue in G Minor, BWV 578

Towson Presbyterian Church

Inclusive - Curious - Compassionate - Courageous

www.towsonpres.org || on social @TowsonPres

Our Mission:

Towson Presbyterian Church is an inclusive community of faith
growing as disciples of Christ

TPC is a PC(USA) *Earth Care Congregation*,
and a member of the *Covenant Network* (striving for a fully inclusive church).

New Here? Welcome—*just as you are.*

We're so glad you're here! We hope you find meaning in our worship and connection within our community of faith. TPC offers two worship opportunities on Sundays: 10:00am in-person and 10:00am live-stream via Facebook, YouTube, and towsonpres.org.

While children are whole-heartedly welcome at all TPC's worship services, our professionally staffed nursery is available for children 0-4 (see a deacon with a red nametag for directions).

We'd cherish the chance to connect with you. If you feel led, please fill out a visitor form at towsonpres.org/contact, so we can get to know you! We appreciate your presence here today, and we hope you are blessed by your time worshipping with us.

We deeply appreciate you joining us today, and hope you are blessed by your time worshipping with us.

Prayer List:

Sue Bromley, Shaun Butler, Walter Cesewski, Charlie Conklin, Jim Flick, Jennifer Gettier, Patsy and Jack Hirst, Bill Hunter, Bill Kladky, Julie Mertus, Sandy Mundy, Phillip Pugh, Patty Rath, Janice Searles, Susan Shockley, Russell Smouse, Patsy Stein, Sue Thompson, Mitzi Tyrie, Lee Weber. *Names are listed for three weeks unless otherwise requested.*

TPC News, Mission, and Ministry Updates

Assisting in Worship || Shirley Albert, Beth Bugg*, Karen Drake, Jason Fitzsimmons, Matt Hemm, Paul Schwab, Bill Sherman, Ellen Tully.

Earth Care Action Team Outreach Table || Today, 11:00–12:00pm || Swing by the ECAT table in Thompson Hall during coffee hour to learn about three key Earth Care bills being considered in this year’s Maryland General Assembly. As an Earth Care Congregation, let’s continue to make a difference together! Visit towsonpres.org/earthcare/ for more details about the bills and easy ways you can reach out to your representatives.

Book Discussion: "Soul Survivor: How My Faith Survived the Church" || Thursdays, 7:00–8:30pm, Mar. 6, Apr. 3 & 24, May 15, Jun. 5 & 26 || In his book, Philip Yancey shares his journey of grappling with the shortcomings of organized religion, particularly his disillusionment with the often-hypocritical aspects of the evangelical church in his upbringing. Despite these struggles, Yancey ultimately finds a faith that is vibrant, authentic, and deeply rooted. Led by Lindsay and Eric Koskinen in the Library.

Baltimore Dakota Learning Camps Informational Session || Sunday, March 16, 11:20–12:30pm || Join us in the Chapel or on Zoom for an informational session led by the Baltimore Dakota Learning Camp leaders and Pastor Joel, who will also be attending the camp this summer. For more info and the zoom link, visit towsonpres.org/events.

Lenten Series: Exploring The Questions That Jesus Asked || Sundays, 11:20–12:30pm in person & 5:30–6:30pm virtual, Mar. 16, Mar. 23, Mar. 30, Apr. 6, Apr. 13 || Jesus' questions to his followers in Scripture can also be an invitation to us to explore our faith and deepen our relationship with God. This Lent we will reflect on five questions that Jesus asked. For more info and the zoom link, visit towsonpres.org/events.

Zoom Book Discussion: "The Abundant Community: Awakening the Power of Families and Neighborhoods" || Mar. 9 & 10, 7:00-8:00pm || The Peacemaking Action Team invites you to explore this motivating book by John McKnight and Peter Block, which highlights how communities can harness their strengths to build a thriving, connected, and supportive environment. To join Rev. Dave Britt on Zoom and for more details, visit towsonpres.org/events.

Visioning Assessment – Spring 2025 || Monday, March 17 || As the visioning body of our church, Session is called to prayerfully discern God’s leading as we live into

our mission. This spring, we are deepening our focus on this process and would love to hear your hopes and perspectives on our community's life together. To this end, we will be launching two important assessments on March 17. The **Church Assessment Tool (CAT)**, open to everyone, will help us better understand our strengths, challenges, and opportunities as a congregation. The **Natural Church Development (NCD) Survey** is a more targeted assessment based on specific criteria, aimed at evaluating key aspects of church health. Your participation in the CAT is essential; we ask every member to take part. Stay tuned for more details.

LOGOS 2nd Run || Wednesdays, 5:30–7:30pm, Mar. 19–Apr. 9 || For adults, youth, and children, LOGOS is a time of intergenerational fellowship, study, worship, and fun! We'll enjoy a family-style meal together, recreation, a brief lesson, and learn a practice that we can take back to Sunday worship. Programming is available for adults and K–12th and this time around, preschoolers and their parents will have their own Bible Study and Worship Arts class. Visit towsonpres.org/events to register now!

Easter Sunday Flowers || Today–March 30 || It's the season of renewal! Send flowers to your loved ones to symbolize love, hope, and new beginnings. Names will be listed in the Easter Sunday bulletin. Visit towsonpres.org/forms to begin your order.



Church Center || TPC's new mobile app church management software is a wonderful way to stay connected to all things TPC! To download it, scan this QR code, or visit towsonpres.org/churchcenter to learn more. Please be sure to use the email address that the church has on file to create your new account and/or log in (if you need help, please contact the church office).

TPC This Week

Sun 3/9:	10:00am	Noah's Nursery (Lower Level)
	10:00am	Worship Service (Sanctuary/Livestream)
	10:15am	Church School (PreK/K-5 th)
	11:00am	Lenten Festival (Thompson Hall)
	12:00pm	SCL (Thompson Hall)

	7:00pm	Book Study: The Abundant Community: Awakening the Power of Families and Neighborhoods (Zoom)
Mon 3/10:	10:00am 7:00pm 7:00pm	Bible Study: General Epistles (Zoom) Circle 13 (Thompson Hall) Book Study: The Abundant Community: Awakening the Power of Families and Neighborhoods (Zoom)
Tue 3/11:	10:30am 2:00pm 7:00pm 7:30pm	Staff Meeting (Library) Parish Visitor Meeting (Library) Book Study: The Politics of Jesus (Zoom) Handbell Choir Rehearsal (Choir Room)
Wed 3/12:	7:00pm 7:00pm 7:00pm 7:30pm 8:00pm	Communications Committee Mtg. (Zoom) ASF Committee Mtg. (Zoom) Deacons Meeting (Zoom) Personnel Committee Mtg. (Zoom) CORE Committee Mtg. (Zoom)
Thu 3/13:	1:00pm 7:30pm	WMA Committee Mtg. (Zoom) Chancel Choir Rehearsal (Sanctuary)